



## BLC Problem Solving



No matter how well production processes are managed and controlled, leather problems and faults will occur which can potentially cause damage to brand reputation, cost implications for your business, products not fit for sale and unsatisfied customers. It is therefore essential that faults are identified and resolved rapidly and efficiently.

A strength of BLC is its leather expertise and the ability to provide in-depth analysis of manufacturing or consumer problems. BLC offer a specialist leather problem solving service using advanced analytical techniques to assist in determining the root cause of the leather problem. Not only we will identify the cause of the problem, we will also offer solutions and advice on how to avoid similar problems from re-occurring in the future.

Our objective is a fast, accurate response and we focus on providing an answer to problems within 5-7 working days. Established for over 90 years, we have the technical pedigree and experience to provide you with dedicated support and solutions when you need us most.

### Problems in Leather Products

There are numerous problems which can arise during manufacture, storage or shipping stages of leather products. In most cases, problems with products will not arise until there are changes in temperature or humidity which will highlight any underlying issues.

The range of problems occurring can be endless, but there are certain leather problems which are frequently seen. This information sheet discusses some of the most common problems.

#### Mould

Mould in leather products can be particularly problematic. It is often seen after shipping where products have been stored for long periods of time. Mould needs a source of food and moisture to grow: leather acts as an ideal food source for mould, therefore it is vital to ensure moisture is controlled at all stages of manufacture, storage and shipping. At BLC, our team of experts can analyse mouldy leather to determine how the mould has occurred, what type of mould is affecting the leather and if/how the mouldy leather can be remediated.

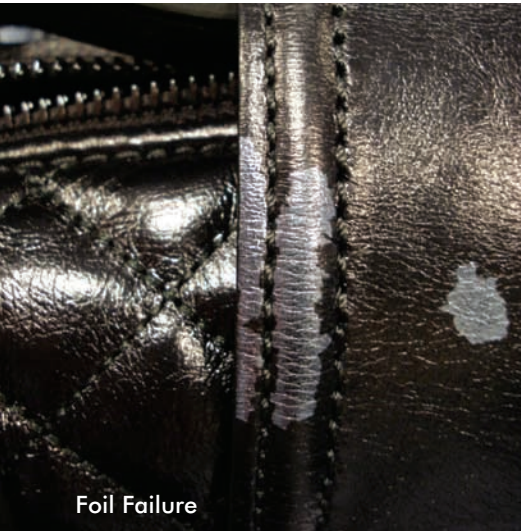
#### Spue

Spue exhibits itself as a white powdery substance on the surface of leather products and can sometimes resemble mould. Most spues seen on leather products are caused by fats or oils which have migrated to the leather surface and crystallised giving a white appearance. Spue can also be caused by excess inorganic salts in the leather. Spue can sometimes be cleaned from the leather but it is often prone to return.

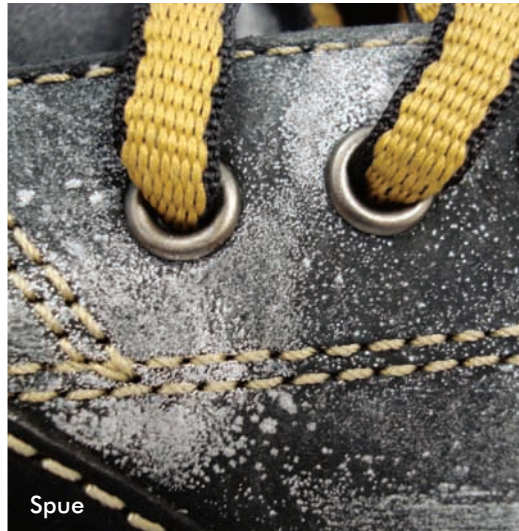
Knowing the cause of the spue allows for changes to be made to prevent re-occurrence of the problem. BLC can help with identifying Spue and provide solutions on how to eliminate future re-occurrences.

#### Foil and Finish Failure

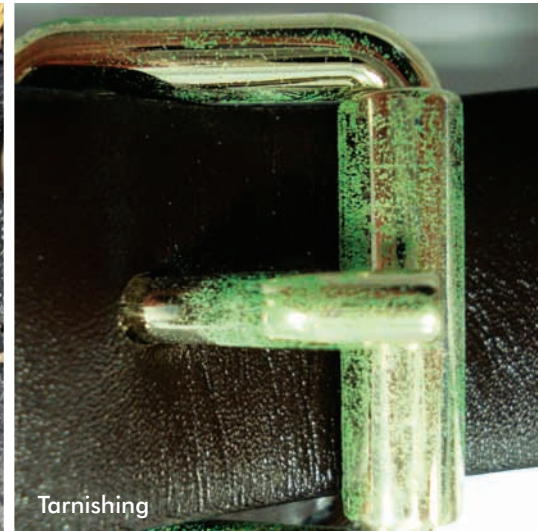
Metallic foiled leathers are a specialist finish type in which problems are often seen. In extreme cases this can be seen by complete loss of the metallic layer from the leather. Damage during one part of product manufacture can make the foil become more susceptible to further damage during subsequent operations. BLC can analyse foiled leathers to identify the cause of foil or finish failure and will advise you on how to avoid problems in the future.



Foil Failure



Spue



Tarnishing

## Colour Transfer/Colour Migration

Colour transfer/migration is typically caused by excess or unfixed dyes in the leather or dyes used in the finishing process. Incompatibility of materials such as adhesives or lining materials can also cause colour transfer problems.

BLC testing can identify problematic materials and once identified can offer practical solutions to the problem.

## Corrosion/Tarnishing of Metal Components

Metallic components are often used in conjunction with leather. Wrong choice of materials or poor plating of metals can lead to potential issues of tarnishing in use.

Some leathers can contain components which can be aggressive to metallic components.

BLC can help identify potential hardware issues and offer assistance with material compatibility.

## Colour Fading/Colour Lightfastness

Poor lightfastness can be a serious issue with leather goods and is often not highlighted until after the product has been made. The problem tends to be related to choice of dye, but tanning and process materials can also impact on the lightfastness of the leather. Certain dye colours and pale shades can be particularly problematic.

BLC can offer practical advice and support on selection of materials to achieve good lightfastness properties.

## BLC Solutions

Products can be sent direct to BLC to identify the cause of leather problems. Once identified, our team of specialists will provide expert leather problem solving advice and support. We will provide you with answers so that you know what is causing the problem, why the problem has occurred and give solutions on how to avoid future problems. We will also confirm if the problem can be remediated. This can take the form of telephone or e-mail support through to provision of expert on-site assistance anywhere in the world.

When things go wrong BLC customers expect much more than testing results, they expect swift, targeted solutions to address their problems. Whatever your leather related problem, BLC is likely to have either seen or solved it before. BLC has the in-depth knowledge of leather, coupled with a thorough understanding of product specifications and performance, means that the organisation is strongly placed to provide problem solving support.

For further information on BLC leather problem solving services please visit our website: [www.blcleathertech.com](http://www.blcleathertech.com) or contact [info@blcleathertech.com](mailto:info@blcleathertech.com) +44 (0) 1604 679999

**BLC members receive 30% discount on all testing, training and problem solving support.**

## Contact us

For more information:

+44 (0) 1604 679999

[info@blcleathertech.com](mailto:info@blcleathertech.com)

[www.blcleathertech.com](http://www.blcleathertech.com)

## Five reasons to use BLC for your leather, footwear and material testing

- Speed of delivery - testing results in 3-5 days
- Specialists in restricted chemical testing
- Technical back up and support from experts if needed
- A focus on customer service and support
- An assured pedigree through 90 years of experience

## BLC Leather Technology Centre Ltd

Kings Park Road  
Moulton Park  
Northampton NN3 6JD  
United Kingdom

t: +44 (0) 1604 679999

f: +44 (0) 1604 679998

e: [info@blcleathertech.com](mailto:info@blcleathertech.com)

[www.blcleathertech.com](http://www.blcleathertech.com)

